

*Connecting caring people and resources
with community needs and opportunities.*

PARK COUNTY
COMMUNITY
FOUNDATION



ANNUAL **2015** REPORT

www.pccf-montana.org



PARK COUNTY COMMUNITY FOUNDATION

Dear Friends of the Park County Community Foundation,

.....

Thank you for the investment you've made in Park County over the past 10 years! You've made a true difference in the lives of infants, teenagers, parents, retirees and seniors who live in our county, from Wilsall and Clyde Park to Livingston, Gardiner and Cooke City. It simply couldn't have been done without your caring outlook and financial support. You created the Park County Community Foundation.

Ten years ago, a group of dedicated and concerned community leaders turned a lost opportunity for Park County into an asset and permanent force for improving the quality of life for all our residents. The lost opportunity was a multi-million-dollar estate that was bestowed elsewhere, because no entity existed in Park County that could accept such a gift and manage it for the benefit of all.

What emerged from that lost opportunity is the Park County Community Foundation, a locally focused, tax-exempt philanthropic public charity that occupies a leadership role throughout the county. Because we are a volunteer-directed organization connected to our community, we are able to identify areas most in need and deserving of help, and then guide varied resources to help fill those gaps.

We work closely with those who want to be involved in local philanthropy – people like you – with the unifying goal of improving the quality of life for persons of all ages. Our purpose remains constant:

- To create a culture of philanthropy throughout Park County at all levels of giving.
- Advance the idea that everyone is responsible for the health and vitality of the community and its residents.
- To develop opportunities for county residents to become actively engaged in strengthening the community.

This couldn't have been done without your confidence, your encouragement and your financial support. Together, we continue to improve quality of life for people in Park County.


Bruce C. McKnight | *Chair, Board of Directors*


Peter D. Fox | *Executive Director*

2015 HIGHLIGHTS OF OUR FISCAL SPONSORSHIPS

MAIN HOTEL EMERGENCY FUND

Nearly two dozen low-income and elderly persons were suddenly evicted in the sub-zero March weather from the Main Hotel on East Park Street as the result of a sewerage failure and subsequent contamination throughout the structure. The Community Foundation immediately teamed with the city administration, Community Health Partners and Human Resource Development Council to establish a fund for food, shelter, clothing and much-needed caring to the displaced residents.

LIVINGSTON BICYCLE CLUB

The Livingston Bicycle Club relied on the Community Foundation to serve as its fiscal sponsor in a cost-share project the club developed with the U.S. Forest Service and Custer Gallatin National Forest to rebuild and maintain the North Dry Creek bicycle trail. The trail serves multiple users in addition to hikers. Overlooking the Paradise Valley from the west, it is one of a very few local mountain bike trail opportunities and is also popular with stock users, especially during hunting season.

LIVINGSTON HOOT

The Park County Community Foundation played an integral role in the success of the 2015 Livingston Hoot, a free, community-wide music extravaganza held on Main Street in the heart of downtown. Organized by impresarios Joanne Gardner and John Lowell and aided by a small army of volunteers, the 2015 event drew more than 6,000 music fans of all ages.

GALLATIN COMMUNITY COLLABORATION

Since January 2013, the Community Foundation has been the fiscal sponsor for the Gallatin Community Collaborative involving Park and Gallatin counties. The goal of the Collaborative is to develop a long-term, permanent resolution of the management of the 155,000-acre Hyalite-Porcupine-Buffalo Horn Wilderness Study Area by engaging the public in a process that incorporates the perspectives of a full breadth of stakeholders. The work is nearing its end in 2016.

2015 HIGHLIGHTS OF OUR DONOR-ADVISED FUNDS AND GRANTS

PINE CREEK FIRE FUND

Distribution was made in 2015 of the final portion of \$130,000 raised to assist Park County Emergency Services and 11 fire departments that battled the 2012 Pine Creek Fire. Working with the Park County Fire Council, a consortium representing all county fire departments, individual fire services were able to add or improve equipment, and conduct training. The single largest grant went to Park County Emergency Services for countywide radio improvement.

ALTRIA GROUP DISTRIBUTION CO./ CRAZY MOUNTAIN RANCH

As a corporation with a presence in Park County through Crazy Mountain Ranch, Altria Group Distribution Co. has a business ethic of investing in local community nonprofits. Altria and Crazy Mountain Ranch have been significant partners with the Community Foundation since 2012. A 2015 grant received by Community Foundation was distributed to more than two dozen local nonprofit groups through the Foundation's discretionary grants programs. A portion of the funds supported Foundation operations expenses.

ARTHUR M. BLANK FAMILY FOUNDATION AND MOUNTAIN SKY GUEST RANCH FUND

The Arthur M. Blank Family Foundation and Mountain Sky Guest Ranch Fund were invaluable partners in the founding of the Park County Community Foundation in 2006. Without doubt, the inspiration and insight into community philanthropy provided by the AMBFF and MSGRF were essential to the beginnings of the Foundation. In 2015, the final portion of a three-year grant provided important operating funds for the Foundation with a significant portion underwriting our work with the Park County Early Childhood Coalition.

BARBARA THRONSON-PARK COUNTY COMMUNITY FOUNDATION SCHOLARSHIPS

Eight Park County high school graduates received the inaugural Barbara Thronson-Park County Community Foundation scholarships. Scholarships are divided among the county's three high schools based on enrollment. The scholarship program honors the memory of Barbara Thronson, who lived with her family in the Paradise Valley.

COMMUNITY FOUNDATION DONORS 2007-2015

- **Altria Distribution Group Corporation/
Crazy Mountain Ranch**
- Hannibal and Julie Anderson
- Shiell Anderson
- **Anonymous**
- **Arthur M. Blank Family Foundation/
Mountain Sky Guest Ranch Fund**
- Michael and Melissa Atkinson
- Bruce and Carol Angiolillo
- Margot Aserlind
- Clyde Aspevig and Carol Guzman
- Greg and Ann Avis
- Gregory R. and Kathryn D. Beardslee
- Walter and Betsy Bennett
- Billy and Joanne Berghold
- Jerry and Lisa Bordelon
- Dorothy Bradley
- Gordon and Vanessa Britton
- Steven W. Caldwell
- Dr. A.S. Cargill
- Dana C. and Sonya Christian
- Ron and Judith Clark
- Karen and Kent Cochran
- Pat Cole
- John W. and Karen Colglazier
- Duane Colmey
- Pamela J. Comstock
- Cross Charitable Foundation
- Milla Cummins
- Tom and Nancy Danaher
- Colin and Seabring Davis
- Tony and Debra Denim
- Dennis and Phyllis Washington Foundation
- Elise Donahue
- Michael Douglas
- Matt and Kelley Dowdell
- Katherine S. Dunlap
- Dave Eaton
- Robert and Robin Ebinger
- Richard Eisen
- Tom Elliot and Barbara Scott
- Felicia Ennis
- **Deborah Erdman and Andreas Luder**
- Robyn L. Erlenbush
- Andrew and Victoria Field
- Rob Forstenzer

- Peter and Nikki Fox
- Laurie Francis
- John Fryer
- Peter Gabbarino and Susan Ryckman
- Joanne Gardner and John Lowell
- Donald B. Gimbel
- John and Peggy Green
- Robert H. and Glee L. Greenwood
- William and Mary Hagemeyer
- John Hancock
- John Heidke and Barbara Hays
- Robert and Deborah Hendrickson
- **High Stakes Foundation**
- Bob and Sue Hove
- George Kelly and Jo Newhall
- Kendeda Fund
- Patricia Kosednar
- Gary and Judy Jagodzinski
- Joyce Green Family Foundation
- Mark and Ann Ledger
- James and Joyce Lincoln
- **Lora L. and Martin Kelley
Family Foundation**
- **Lore Kann Foundation**
- Stan and Andrea Lumsden
- Richard G. Lyon
- John P. Mabie
- MacArthur Foundation
- Peggy Madden
- Ted Madden and Cara McNeely
- McNeely Foundation
- **Bliss and Marcia McCrum**
- **Bruce and Claire McKnight**
- Harry McNeely
- Trina McNeely and Garth Morrisette
- Kirk and Connie Michels
- Tom and Bonnie Murphy
- Newberry Family Foundation
- Gayla R. Nicholson
- **O.P. & W.E. Edwards Foundation**
- Paul and Natalie Orfalea
- **Orfalea Foundation**
- Oro y Plata Foundation
- Peggy Owens
- Richard Pate
- John and Bobbi Jo Payne

- Mark and Kathy Pesa
- **Denis and Barbara Prager**
- Glen and Linea Pritchard
- Dave and Tracy Raich
- Alex Rate and Jenny Harbine
- Bruce and Diana Rauner
- Jami Rebsom
- Paul and Beverly Rice
- Tawnya Rupe
- Mark Schulein and Gen Reid
- Robert Schleicher
- Jeffrey Schutz and Charlotte Caldwell
- Dale Sexton
- Neil Sexton and Annette Beaver
- Tom Shellenberg
- Solid Rock Foundation
- **Tim and Denny Solso**
- **Stafford Foundation**
- **Stake Foundation**
- **David Stanley and Jean Keffeler**
- **Steele Reese Foundation**
- Eric and Rachel Stern
- **Mike and Debbie Steuert**
- Leland Stocker
- Evelyn Strong
- Carole and Dan Sullivan
- Nels and Debra Swandal
- Joseph Swindlehurst
- John Tomlin
- Ann C. Tyler
- Clinton and Margaret Vermillion
- Pat and Jen Vermillion
- Dan and Ann Vollum
- Richard Waddington
- Douglas P. and Kristin A. Wadle
- T.W. Wagner
- Margaret Ward
- William Ward
- Carl and Elizabeth Webb
- Wells Fargo Foundation
- Walt Weissman
- Lew and Jill Wilks
- Ken and Vicki Wilson

Bold: Vitality Circle donors have provided gifts of \$10,000 or more

Every effort is made to correctly list and thank each investor who allows us to make a public acknowledgement of their gift to the Community Foundation. If your name is missing or incorrect, we apologize for the error. Please contact us with corrections at (406) 224-3920 or Office@PCCF-Montana.org. Beginning in Fiscal Year 2015, the Foundation is recognizing donors to entities that receive our fiscal sponsorship.

(Compiled from published lists 2007-2015.)



BUSINESS DONORS 2009-2015

- 2nd St. Bistro
- 406 Ranch and Road Spraying Inc.
- Absaroka Realty
- Ace Hardware of Livingston
- American Bank
- Boeing Company
- Citizens for Balanced Use
- Coffee Crossing
- Community Closet
- Community Health Partners
- Conley's Books and Music
- D A Davidson & Co.
- David Viers and Associates
- First Interstate Bank
- Four Quarters
- Grizzly Creek Retreat Center
- Hayhook, LLC
- Heart K Land and Cattle Co.
- Huppert, Swindlehurst and Woodruff
- James Maddox Properties
- Leavitt Great West Insurance
- Livingston Healthcare
- Livingston Roundup Association
- Livingston Veterinary Hospital
- Miller Architects
- Montana Karate
- Montana Wilderness Association
- Muddy Creek Ranch
- Neptune's Brewery
- Northwestern Energy
- OM Studio, LLC
- Opportunity Bank
- Park County Treasurer
- Park Electric Cooperative Inc.
- Park Place Hospitality Group (Glenn's)
- Pop Stand Community Fund
- Printing for Less
- Ranches West
- Rancho Picante Bison
- Rubber Ducky Rentals
- Sky Federal Credit Union
- Snork LLC
- Stillwater Mining
- Swandal Law
- The Cowboy Connection
- The Owl Lounge
- The Stockman
- Timber Trails
- Timberbuilt
- Watson Law Office
- West Creek Ranch
- Whiskey Creek Saloon

MISSION

The Park County Community Foundation is dedicated to enhancing the spirit of community and quality of life in Park County through stewardship of permanently endowed funds, grant making and other activities. We connect caring people and resources with community needs and opportunities.

VISION

The Park County Community Foundation will be a dynamic and distinctive philanthropic leader fostering collaborative community action to shape a healthy, caring community. In order to carry out this mission, the Foundation:

- Identifies, analyzes and addresses needs of the various communities of Park County as they exist, emerge and merit assistance.
- Builds a pool of charitable capital, preserving and enhancing the funds placed in its trust.
- Raises the capacity of nonprofit organizations to serve the geographic communities and communities of interest through its grant-making and other supportive actions.
- Develops a greater regional sense of community by promoting diversity and encouraging shared responsibility for community improvement.
- Assists donors by providing knowledge, methods and opportunities for advancing a wide range of important charitable interests.

OPERATING PRINCIPLES

In meeting community needs, the Park County Community Foundation adheres to the following operating principles:

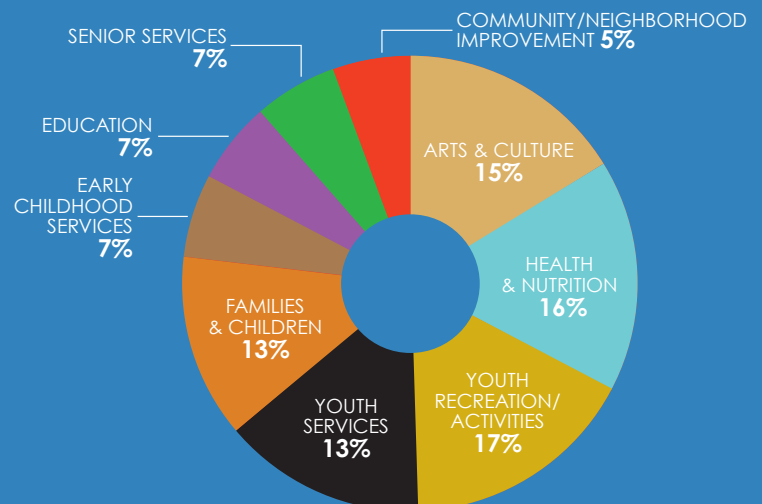
- Respect the stated charitable intent of all donors.
- Emphasize and promote a long-term perspective toward community vitality and flexibility.
- Meet immediate needs with an emphasis on the nonprofit sector.
- Reflect the diversity of our community through Foundation activities and governing board membership.
- Maintain independence, integrity, and objectivity in Foundation pursuits.
- Emphasize a proactive posture and focus on the prevention of problems and root causes whenever possible.
- Develop program-related activities only when no other qualified institution exists to do so.
- Recognize and appreciate that Park County is comprised of many communities, both geographic and otherwise, and to encourage countywide collaboration when appropriate.

PARK COUNTY COMMUNITY FOUNDATION GRANT RECIPIENTS 2007-2015

- Angel Line
- ASPEN (Abuse Support & Prevention Education Network—formerly Tri-County Network Against Domestic Violence)
- Big Brothers Big Sisters of Park and Sweet Grass Counties
- Big Sky Youth Empowerment
- CASA/GAL Youth Advocates
- Chicks in Chaps
- Child Care Connections
- Climbing Boulder
- Climbing Wall
- Clyde Park Community Improvement Committee
- Clyde Park Fire Department
- Cooke City Fire Department
- Crazy Mountain Productions
- Farms for Families
- Farm-to-Schools, Livingston School District
- Gallatin Community Collaborative
- Gardiner Chamber of Commerce
- Gardiner Community Center
- Gardiner Food Pantry
- Gardiner/Mammoth Youth Soccer
- Greater Gardiner Community Council
- Greater Yellowstone Coalition
- Horse Medicine – Youth Program
- Human Resource Development Council (Park County seniors programs)
- Judicial Partners for Children
- Junior Achievement
- Landon's Lookout
- Learning Partners/Community Health Partners
- Lincoln School Foundation
- Links for Learning
- Livingston Bicycle Club
- Livingston Braves Baseball
- Livingston Center for Arts and Culture
- Livingston Community Choir
- Livingston Community Kids Choir
- Livingston Depot Foundation
- Livingston Education Foundation
- Livingston Fire & Rescue
- Livingston Food Resource Center
- Livingston HealthCare Foundation
- Livingston Hoot
- Livingston Ice Skating Association
- Livingston-Park County Tennis Association
- Livingston Public Library
- Livingston Youth Soccer Association
- Main Hotel Emergency Fund
- Meals on Wheels
- Montana Horse Sanctuary
- Montana State University Extension
- Montessori Island School
- Northside Park and Soccer Fields
- Night Owl Run
- Paradise Valley Fire Department
- Park County 4-H
- Park County Environmental Council (electronics recycling)
- Park County Fairgrounds Association
- Park County Fire Council
- Park County Pathway Early Childhood Council
- Park County Pediatric Care Team
- Park County Senior Center
- Park County Spelling Bee
- Peer Support Drop-in Center
- RSVP Senior Volunteer Program
- Rotary Splash Park
- Sedan Community Center
- Shane Lalani Center for Arts
- Shields Valley Community Center
- Shields Valley Elementary School
- Shields Valley Farmers Market
- Shields Valley FFA
- Shields Valley High School
- Shift Youth Program (formerly Manaia)
- Sleeping Giant Middle School
- Snoopy Cooperative Preschool – Gardiner
- Southwest Chemical Dependency
- Western Montana Mental Health
- Western Sustainability Exchange
- Wilsall Fire Department
- Yellowstone Ballet
- Yellowstone County Guardians
- Yellowstone Gateway Museum



PARK COUNTY COMMUNITY FOUNDATION GRANT MAKING DISTRIBUTION 2007-2015



CONSOLIDATED STATEMENT OF FINANCIAL POSITION

AS OF DECEMBER 31, 2015

Assets

Cash and Cash Equivalents	\$254,113
Investments	\$191,415
Contracts Receivable	\$2,983
Grants Receivable	\$19,000
Security Deposit	\$100
Total assets	\$467,611

Liabilities

Payroll Liabilities	\$1,069
Total liabilities	\$1,069

Net Assets

Unrestricted	\$404,596
Temporarily Restricted	\$61,946
Total net assets	\$466,542
Total liabilities & net assets	\$467,611

.....

*An audit of the affairs
of the Park County
Community Foundation
has been conducted by
Holmes and Turner,
a professional corporation
in Bozeman, MT, which
issued an unmodified
opinion. The audit
covered the year ending on
December 31, 2015.*

.....

CONSOLIDATED STATEMENT OF ACTIVITIES

FOR THE FISCAL YEAR ENDING DECEMBER 31, 2015

	UNRESTRICTED	TEMPORARILY RESTRICTED	TOTAL 2015
Revenues			
Contributions, Grants and Contract Revenue	\$178,321	\$180,163	\$358,484
Investment Return	\$11,252		\$11,252
Program Revenue	\$100		\$100
Net Unrealized Losses on Investments	(\$10,322)		(\$10,322)
Total revenues	\$179,351	\$180,163	\$359,514
<i>Net Assets Released from Restrictions:</i>			
Satisfaction of Program Restrictions	\$263,057	(\$263,057)	\$0
Total revenues & other support	\$442,408	(\$82,894)	\$359,514
Expenses			
Program	\$419,300		\$419,300
Management & General	\$77,588		\$77,588
Fundraising	\$4,476		\$4,476
Total expenses	\$501,364	—	\$501,364
Change in Net Assets	(\$58,956)	(\$82,894)	(\$141,850)
Net Assets at Beginning of Year	\$463,552	\$144,840	\$608,392
Net assets at end of year	\$404,596	\$61,946	\$466,542

(This financial information is excerpted from Park County Community Foundation's audited statements.)

BOARD OF DIRECTORS

Bruce McKnight,
Board Chair
Annie Beaver, *Vice Chair*
and Treasurer
Bob Hove, *Secretary*
Michael Atkinson

Donald E. Gimbel
Tracy Raich
Carole Sullivan
Debra Swandal
Jen Vermillion

EMERITUS DIRECTORS

Hannibal
Anderson
Shiell Anderson
Margot Aserlind
Laurie Bishop
Milla Cummins
Seabring Davis

Dave Eaton
Tom Elliot
Felecia Ennis
Rob Forstenzer
Laurie Francis
Karen Hayes
George Kelly

Marcia McCrum
John Payne
Denis Prager
Jami Rebsom
Tawnya Rupe
David Stanley
Leland Stockard

PHOTO CREDITS:

*COVER (clockwise from top): John Zumpano, Yellowstone River;
Shawn Raecke/Livingston Enterprise, Wilsall Rodeo; Shutterstock.com, Roosevelt Arch;
William Campbell, Livingston Hoot*

PAGE 2: John Zumpano

*PAGE 4 (left to right): Greg Coleman/Gallatin Community Collaborative;
William Campbell; Greg Coleman*

PAGE 7: Hunter D'Antuono/Livingston Enterprise

BACK COVER (clockwise from top): John Zumpano; Livingston Bicycle Club; Barbara Shesky



406.222.3920 | www.pccf-montana.org

PARK COUNTY COMMUNITY FOUNDATION

PO Box 2199
Livingston, MT 59047